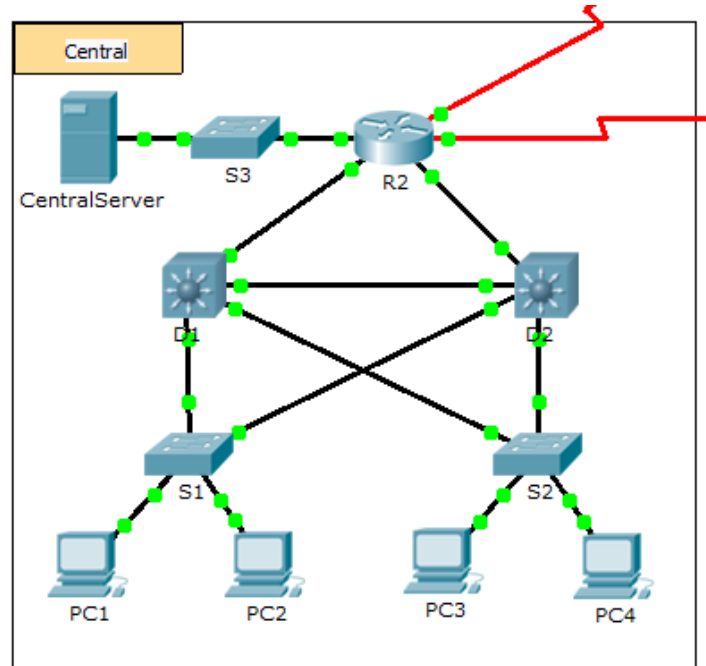


# Packet Tracer - Documenting the Network (Instructor Version)

**Instructor Note:** Red font color or Gray highlights indicate text that appears in the instructor copy only.

## Topology



## Background

In this activity, your job is to document the addressing scheme and connections used in the Central portion of the network. You must use a variety of commands to gather the required information.

**Note:** The user EXEC password is **cisco**. The privileged EXEC password is **class**.

## Requirements

- Access the command line of the various devices in Central.
- Use commands to gather the information required in the **Addressing Scheme and Device Connection Documentation** table.
- If you do not remember the necessary commands, you can use the IOS built-in help system.
- If you still need additional hints, refer to the **Hints** page. In Packet Tracer, click the right arrow (>) on the bottom right side of the instruction window. If you have a printed version of the instructions, the **Hints** page is the last page.

Addressing Scheme and Device Connection Documentation

Device Name	Interface	Address	Subnet Mask	Connecting Device	
				Device Name	Interface
R2	G0/0	10.255.255.245	255.255.255.252	D1	G0/1
	G0/1	10.255.255.249	255.255.255.252	D2	G0/1
	G0/2	10.10.10.1	255.255.255.0	S3	G0/1
	S0/0/0	64.100.100.1	255.255.255.252	Internet	N/A
	S0/0/1.1	64.100.200.2	255.255.255.252	Intranet	N/A
S3	VLAN 1	10.10.10.254	255.255.255.0	N/A	N/A
	F0/1	N/A	N/A	CentralServer	NIC
	G0/1	N/A	N/A	R2	G0/2
CentralServer	NIC	10.10.10.2	255.255.255.0	S3	F0/1
D1	VLAN2	10.2.0.1	255.255.255.0	N/A	N/A
	G0/1	10.255.255.246	255.255.255.252	R2	G0/0
	G0/2	10.255.255.254	255.255.255.252	D2	G0/2
	F0/23	N/A	N/A	S2	F0/23
	F0/24	N/A	N/A	S1	G0/1
S1	VLAN 2	10.2.0.2	255.255.255.0	N/A	N/A
	F0/23	N/A	N/A	D2	F0/23
	G0/1	N/A	N/A	D1	F0/24
D2	F0/23	N/A	N/A	S1	F0/23
	F0/24	10.3.0.1	255.255.255.0	S3	G0/1
	G0/1	10.255.255.250	255.255.255.252	R2	G0/1
	G0/2	10.255.255.253	255.255.255.252	D1	G0/2
S2	VLAN 1	10.3.0.2	255.255.255.0	N/A	N/A
	F0/23	N/A	N/A	D1	F0/23
	G0/1	N/A	N/A	D2	F0/24

### Hints

Use the following commands to gather the information you need to document the network:

```
show ip interface brief
show interfaces
show running-config
ipconfig
```